



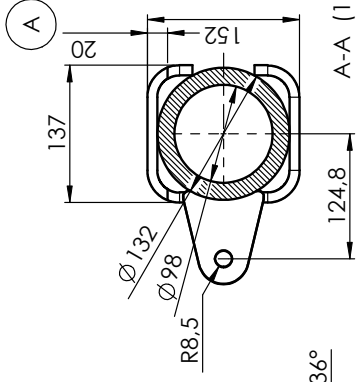
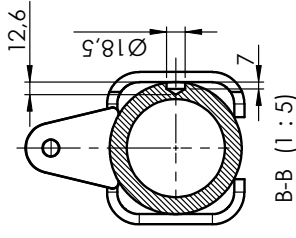
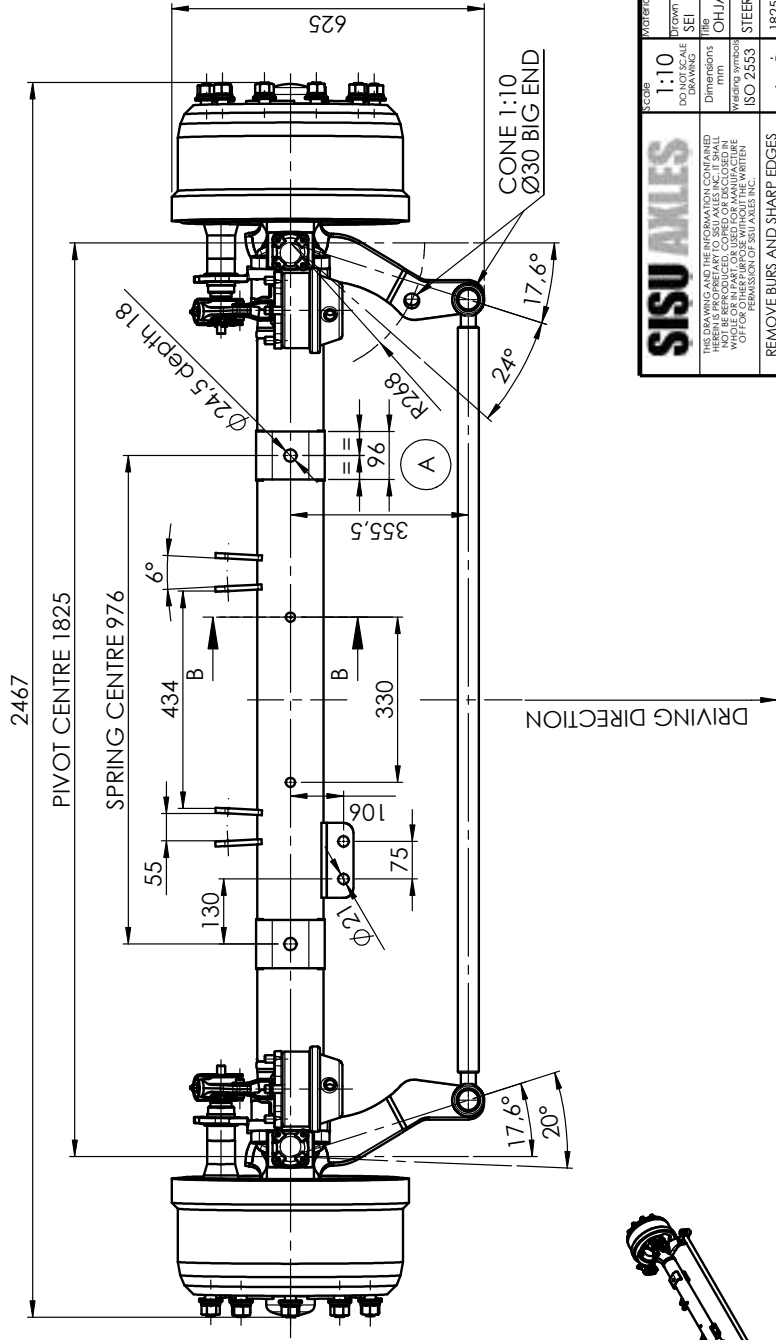
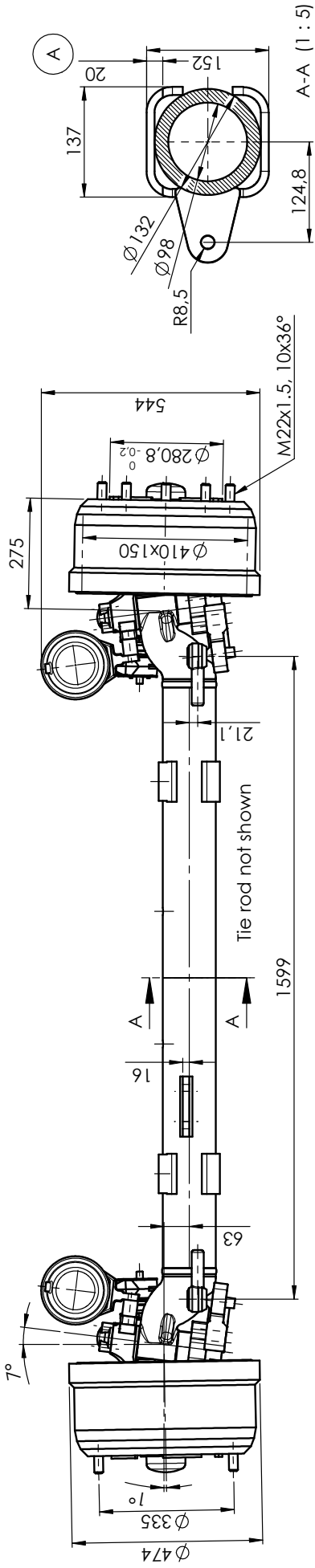
HIGH SPEED, (TRUCK) NON-DRIVE STEER AXLE, FSND08S (Rear)

| | |
|---|--|
| GAWR | 8 000 kg [17,500 Lb.] |
| Axle Type | Beam Type, Fabricated Steel |
| Brakes | |
| Type | Drum, S-cam |
| Size | Ø410 mm x 150 mm |
| Slack Adjuster | Automatic, 165 mm [6.5 Inch] Length |
| Chamber | 16 Square Inch |
| Steering | |
| KPI | 7° |
| Caster | 0° |
| Camber | 1° |
| Turn angle | 24° |
| Steering geometry (Ackerman) | Wheelbase 2.8m [110.2 Inch], Outer wheel angle 20° |
| Housing | Fabricated Steel, Cross Section ø132 mm, Wall thickness 17 mm |
| Wheel End | 10-studs on 335 mm BC, 280.8 mm Pilot Diameter Minimum Wheel Size 20 Inch |
| Wheel offset (optimal) | Inset 120...160 mm [4.7...6.3 Inch] |
| Tracks Available (Over wheel mounting faces) | 2375 mm [93.5 Inch] |
| Lubrication | |
| Type | Lithium Based Multi Purpose Grease According to NLGI 2 |
| Weight-Dry | 473 kg [1,040 Lb.] |

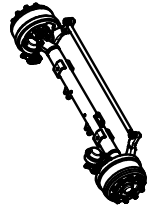
All ratings are nominal. Actual capacities determined based upon review of application data by Sisu Axles Inc.

| | | |
|-----------------|---------------|-----------------------------|
| OPTIONS: | Spring Seats | Wheel Stud Length |
| | Wheel Nuts | Brake Chambers |
| | ABS Provision | Steering Arm Configurations |
| | Top Coating | |

Other options may be available. Contact Sisu Axles sales for more information.



AXLE CAPACITY 8000kg/ 100km/h
K.P.I. 7°
CAMBER 1°



SISU AXLES

THIS DRAWING AND THE INFORMATION CONTAINED HEREIN IS THE PROPERTY OF SISU AXLES INC. IT IS TO BE USED ONLY FOR THE MANUFACTURE OF PARTS FOR THE ORIGINAL EQUIPMENT. REPRODUCTION OR TRANSMISSION IN ANY FORM OR BY ANY MEANS WITHOUT THE WRITTEN PERMISSION OF SISU AXLES INC.

REMOVE BURS AND SHARP EDGES

Dimensional tolerances:
 Class of tolerances: ISO 268mk
 Surface finish: DIN 6730-m
 Welding and brazing processes: ISO 9013:11
 Welded constructions: SFS EN ISO 13920-BE

| | | | | | |
|----------------------|---------------------|------------------------|-----------------------|----------|---------|
| Scale | 1:10 | Material | SEI | Product | FSND-08 |
| Drawn | SEI | Drawn | 15.03.2007 | Approved | JJU |
| Date | 15.03.2007 | Date | 19.03.2007 | Weight | kg |
| Dimensions | mm | Title | OHJAAVA TAKA-AKSELLI, | | |
| Welding symbol | ISO 2553 | STEERING REAR AXLE | | | |
| Surfaces | ISO 268mk | 1825mm STEERING CENTRE | | | |
| Re | ISO 9013:11 | Drawing no | M540-050-0001 | | |
| Welded constructions | SFS EN ISO 13920-BE | Rev. | A | | |
| Drawn by | MRE | Sheet | 1/1 | | |
| Approved | | Drawing size | A3 | | |

Description: Lisäily jousitasoihin koneistusta