

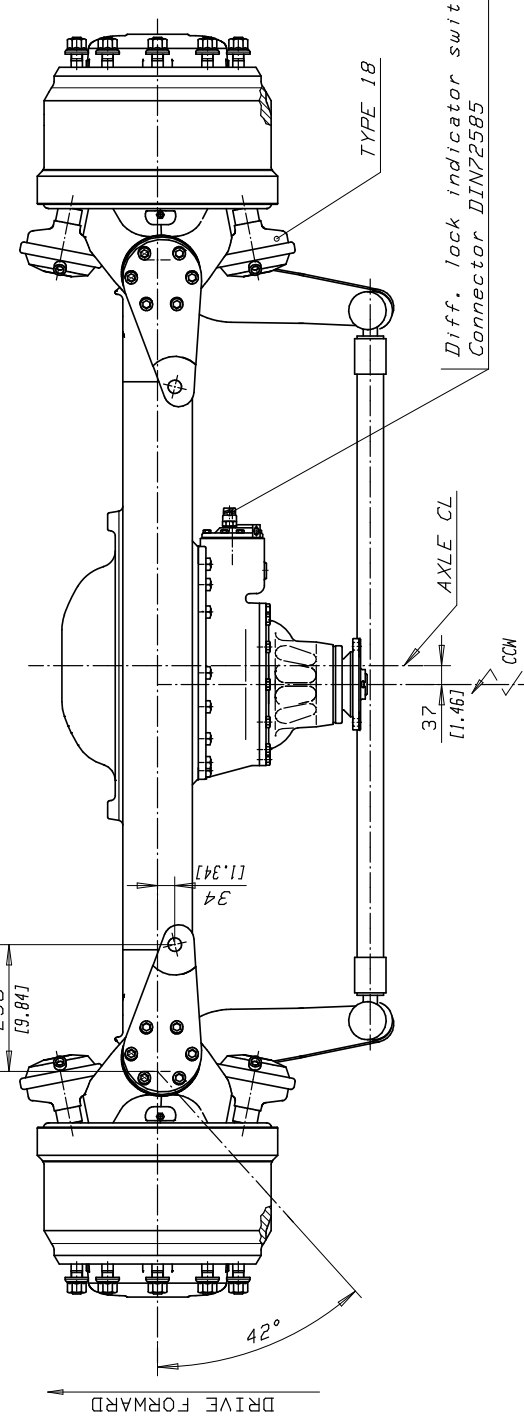
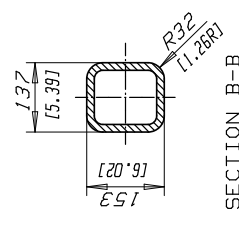
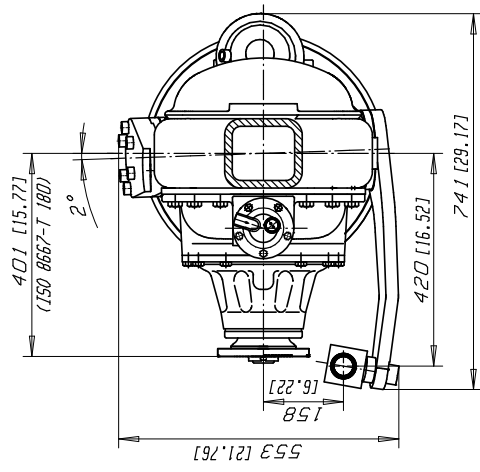
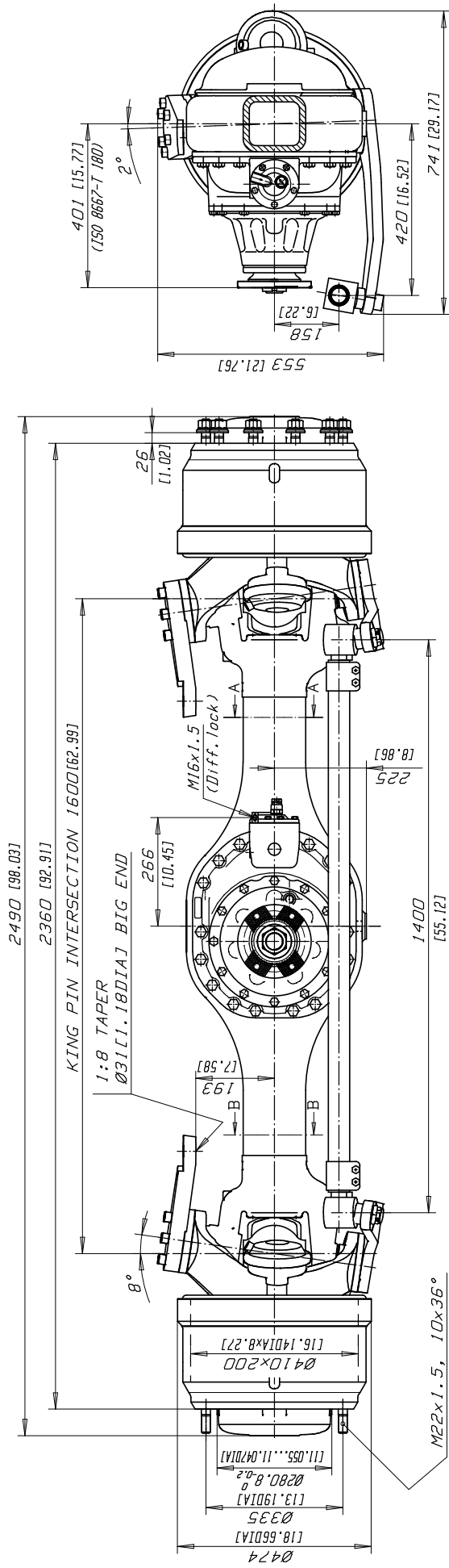
HIGH SPEED, (TRUCK) DRIVE STEER AXLE, FSDP14G

GAWR	14 000 kg [31,000 Lb.]
GCWR	75 000 kg [165,000 Lb.]
Axle Type	Spiral Bevel Center Differential Planetary Wheel End Reduction, 5-planet Carrier
Brakes	
Type	Wedge Duplex
Size	Ø410 mm x 200 mm
Chamber	18 Square Inch
Certification	FMVSS 121
Steering	
KPI	8°
Caster	2°
Camber	0°
Turn angle	42°
Steering geometry (Ackerman)	Wheelbase 2.8m [110.2 Inch], Outer wheel angle 31°
Housing	Fabricated Steel, Cross Section 153 mm Height x 137 mm Width, Center Bowl
Wheel End	10-studs on 335 mm BC, 280.8 mm Pilot Diameter Minimum Wheel Size 20 Inch
Wheel offset (optimal)	Inset 130...165 mm [5.1...6.5 Inch]
Drive Flange	ISO8667-T180
Final Drive Ratios	4.65, 4.90, 5.54, 6.36, 7.01, 8.79, 9.51 and 10.55
Tracks Available (Over wheel mounting faces)	2360 mm [92.9 Inch] or 2580 mm [101.6 Inch]
Lubrication	
Type	API GL-5, SAE90, 140, 80W-140, Synthetic Acceptable
Capacity (estimated)	Total 21 liters [44 pints]
Weight-Dry (for Track 2360 mm)	915 kg [2,017 Lb.]

All ratings are nominal. Actual capacities determined based upon review of application data by Sisu Axles Inc.

OPTIONS:	Spring Seats	Wheel Stud Length
	Wheel Nuts	Axle Differential Lock
	Input Drive Flanges	Brake Chambers
	ABS Provision	Steering Arm Configurations
	CTI Provision	Top Coating

Other options may be available. Contact Sisu Axles sales for more information.



SISU AXLES	Suunnittelija	JL i	Hyv.	Yks.	Yks.
	Pvm.	2007-04-10	Kort.	Massa/Lask./Punnittu	Pvm. :ent/mer/ Uusi
FSDP-14-G	DIMENSION DRAWING		CM	M541 040 0028	1:10
	FRONT AXLE				

FOR OFFERING PURPOSES ONLY