

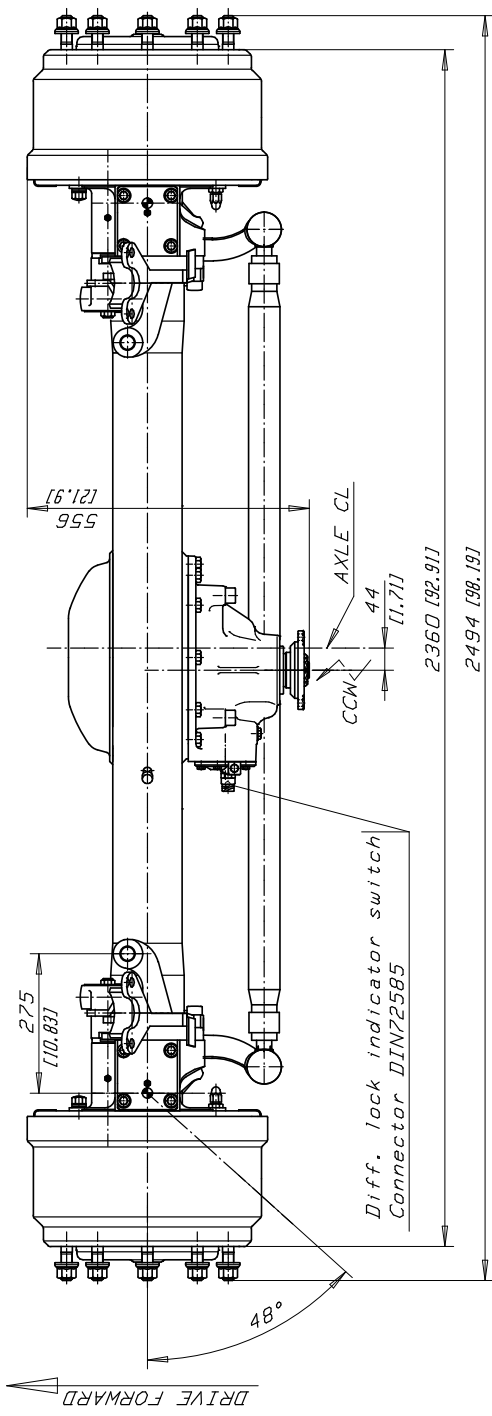
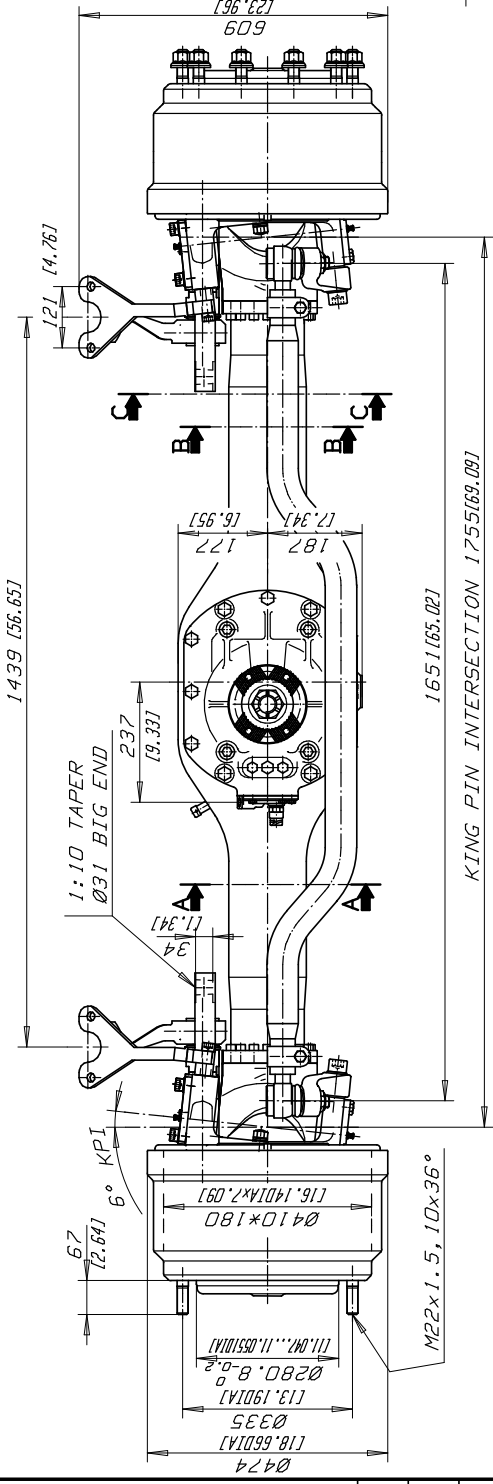
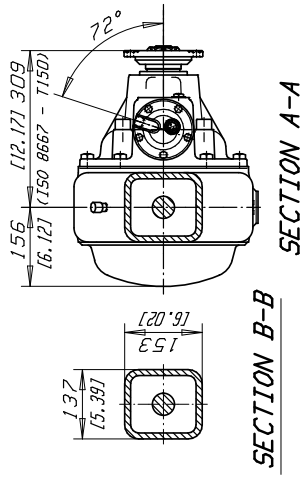
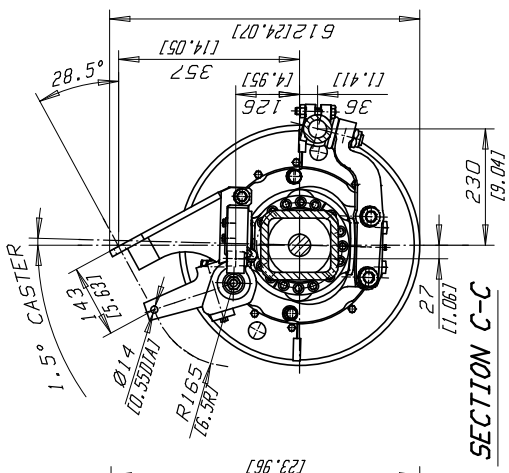
HIGH SPEED, (TRUCK) DRIVE STEER AXLE, FSDP10S

GAWR	10 000 kg [22,000 Lb.]
GCWR	20 000 kg [44,000 Lb.]
Axle Type	Spiral Bevel Center Differential Planetary Wheel End Reduction, 5-planet Carrier
Brakes	
Type	Drum, S-cam
Size	Ø410 mm x 180 mm Width
Slack Adjuster	Automatic, 165 mm [6.5 Inch] Length
Chamber	30 Square Inch
Certification	FMVSS 121
Steering	
KPI	6°
Caster	1.5°
Camber	0°
Turn angle	48°
Steering geometry (Ackerman)	Wheelbase 3.6m [141.7 Inch], Outer wheel angle 37°
Housing	Fabricated Steel, Cross Section 153 mm Height x 137 mm Width, Center Bowl
Wheel End	10-studs on 335 mm BC, 280.8 mm Pilot Diameter Minimum Wheel Size 20 Inch
Wheel offset (optimal)	Inset 90...165 mm [3.5...6.5 Inch]
Drive Flange	ISO8667-T150
Final Drive Ratios	4.27, 4.63, 4.85, 5.27, 5.54, 5.66, 6.36, 7.01, 8.83, 9.61 and 10.58
Tracks Available (Over wheel mounting faces)	2360 mm [92.9 Inch]
Lubrication	
Type	API GL-5, SAE90, 140, 80W-140, Synthetic Acceptable
Capacity (estimated)	Total 13 liters [27 pints]
Weight-Dry	740 kg [1,631 Lb.]

All ratings are nominal. Actual capacities determined based upon review of application data by Sisu Axles Inc.

OPTIONS:	Spring Seats	Wheel Stud Length
	Wheel Nuts	Axle Differential Lock
	Input Drive Flanges	Brake Chambers
	ABS Provision	Steering Arm Configurations
	CTI Provision	Top Coating
	Slack Adjuster Type	

Other options may be available. Contact Sisu Axles sales for more information.



SISU AXLES	Suunnittelija	JL i	Vast.	Hyv.		Pvm. Lask./ Punnittu Massa/Lask./ Punnittu Jäike lu
	Pvm.	2007-04-25	Stand.	Kort.	1:10	
FSDP-10-S	DIMENSION DRAWING					
	PLANETARY STEER AXLE					
M541 018 0032						CM

FOR OFFERING PURPOSES ONLY